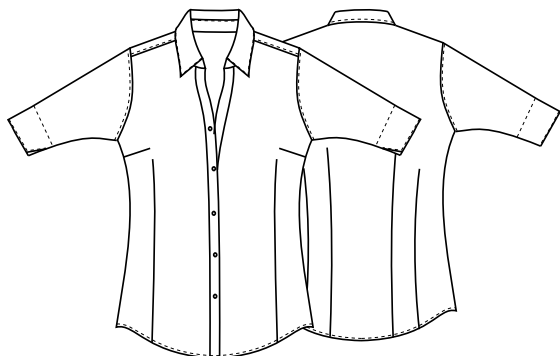


65 cm



DETTAGLI

- Collo fantasia
- Manica 3/4

TAGLIE

XS ÷ 3XL
Regular Fit

COLORE

00 Bianco

TESSUTO

65% poliestere
35% cotone
110 g / m²



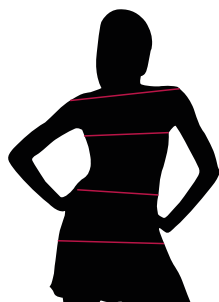
Le misure indicate si riferiscono alle taglie **S** per i capi femminili, **L** per i capi maschili. Per i capi a taglia unica le misure indicate sono effettive.

COLORI DISPONIBILI



00 Bianco

TABELLE TAGLIE
E CORRISPONDENZE

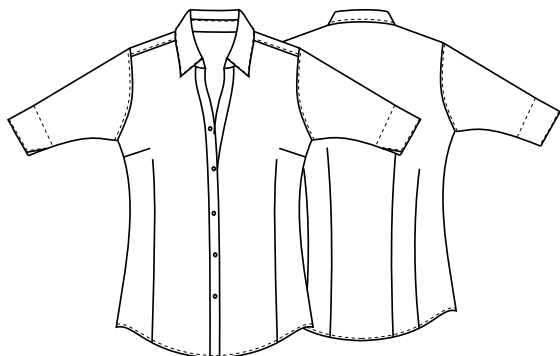


1
2
3
4

TABELLA ST-N3	REGULAR FIT						
TAGLIA	XS	S	M	L	XL	XXL	3XL
1 - SPALLE							
2 - CIRCONFERENZA TORACE	85-89	90-93	94-97	98-101	102-105	106-109	109-113
3 - CIRCONFERENZA VITA	73-77	78-81	82-84	85-89	90-93	94-97	97-100
4 - CIRCONFERENZA BACINO							

GUIDA ALLE TAGLIE **1)** Prendere le misure anatomiche (corpo con abbigliamento intimo) senza stringere mantenendo ben teso il metro. **Nota:** nel caso vogliate indossare dei camici già con dell'abbigliamento sotto prendete le misure già abbigliati. **2)** Nel caso tra le misure prese vi fosse una misura a cavallo fra 2 taglie vi consigliamo di prendere quella più grande. **3)** Le misure della tabella sono espresse in centimetri.

65 cm



DETAILS

- Open collar
- 3/4 Sleeve

SIZES

XS ÷ 3XL
Regular Fit

COLOURS

00 White

FABRIC

65% polyester
35% cotton
110 g / m²



The measures indicated refer to sizes **S** for women, **L** for men. For one-size-fits-all garments, the measurements indicated are effective.

AVAILABLE COLOURS



00 White

SIZE TABLES
AND CORRESPONDENCES

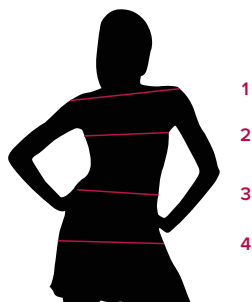


TABLE ST-N3 REGULAR FIT							
SIZE	XS	S	M	L	XL	XXL	3XL
1 - SHOULDERS							
2 - CHEST CIRCUMFERENCE	85-89	90-93	94-97	98-101	102-105	106-109	109-113
3 - WAIST CIRCUMFERENCE	73-77	78-81	82-84	85-89	90-93	94-97	97-100
4 - HIPS CIRCUMFERENCE							

SIZE GUIDE 1) Take the anatomical measurements (body with underwear) without tightening, keeping the measuring tape taut. Note: in case you want to wear of the gowns already with the clothing underneath take the measurements already dressed. **2)** If there is a measure between 2 sizes between the measurements taken, we advise you to take the bigger one. **3)** The measurements in the table are expressed in centimeters.